

SAFESEAL-AI™

A.I. VISION SEAL INSPECTION **PATENT PENDING**



SafeSeal-AI
A.I. Vision Inspection

Don't let a bad seal get you down.

Tishma Technologies has harnessed the power of A.I. to offer an unbelievably easy to use in-line heat seal inspection system for the food and medical industries. We applied our deep-learning A.I. vision tools to thermal images to find most sealing defects - including those that are almost impossible to find with rules-based vision tools or even standard vacuum-check inspections. This PC-based, turnkey inspection system includes everything you need to reliably inspect your heat sealed trays or packaged product at a rate of 300 scans/minute.



CONTACT 847.884.1805 | info@tminn.com

Information presented is subject to change as product improvements are made. Contact your account representative for current specifications.

▶ VALIDATES YOUR PROCESS

Continually monitors your process - allowing you to correct discrepancies before they become major issues

▶ INLINE INSPECTIONS

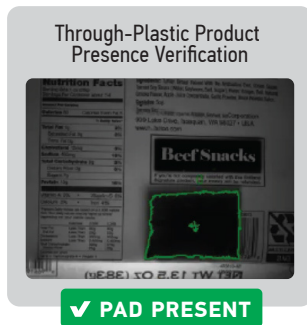
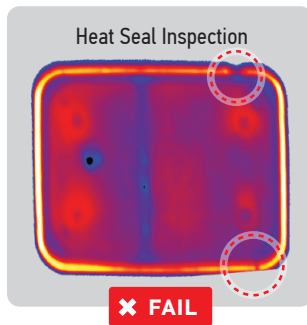
Offers a reliable, repeatable, and precise inline seal and product inspection process - allowing for increased productivity, quality control, customer safety and satisfaction.

▶ EASY TO USE

Clean, simple interface makes it easy for your crew to confidently take ownership of the system.

KEY BENEFITS

- ✓ Fast, User-Friendly Deployment
- ✓ Improved Line Speed and Efficiency
- ✓ Improved Quality Control
- ✓ All Color Graphics
- ✓ Bilingual Inclusion (English/Spanish)
- ✓ Operational in Ambient to Freezer Temperature Environments



FEATURES

- ✓ Deep Learning A.I. Trained by Example
- ✓ Optimized for Factory Automation
- ✓ Extensive Database/ERP Connectivity
- ✓ Optional Text and Code Verification
- ✓ Visual Reject Notification and/or Upstream/Downstream Signal to Line Stop
- ✓ Positive Compressed Air / Cooled Cabinet
- ✓ Large HMI Color Touchscreen
- ✓ Customer Dictated Rejection Integration
- ✓ Heat Sealer Platen & Gasket Verification

INSPECTIONS INCLUDE

- ✓ Objects Under Seal
- ✓ Incorrect Materials
- ✓ Wrinkled Materials
- ✓ Process Failure
- ✓ Absorbent Pad Present Detection
- ✓ Content / Mix Verification
- ✓ Product Qty Verification
- ✓ Folded Corners
- ✓ Double Seal
- ✓ Misaligned Materials
- ✓ Product Recognition / Mold Detection *Through Plastic inspection
- ✓ Date Code / Label Present Verification
- ✓ Fat Content (Marbling)

TECHNICAL SPECIFICATION

SPEED	Up To 300 Scans/Min.
DIMENSIONS	W: 40" L: 44" H: 89" (variable)
INSPECTION TYPE	Thermal, Visible Spectrum
FRAME	Stainless Steel IP69K Rated
ELECTRICAL	440/3/60hz Nema 4X
CONVEYOR	(length based on application) Included
TEMPERATURE RATING	-20 to 110°F
DATA STORAGE	(unlimited with customer connected database) 20TB Locally

CONTACT

847.884.1805

info@tminn.com

